



# Going Places Travel Pte Ltd

日航旅游私人有限公司

Block 202 # 01-485 Bedok North Street 1 Singapore 460202  
Email: [gptravel@singnet.com.sg](mailto:gptravel@singnet.com.sg) Web: [www.gptravel.com.sg](http://www.gptravel.com.sg)  
Tel : 6442 0010 Fax: 6442 5055



## 7D6N SRI LANKA DISCOVERY TOUR (Kandy – Nuwara Eliya – Galle – Colombo)



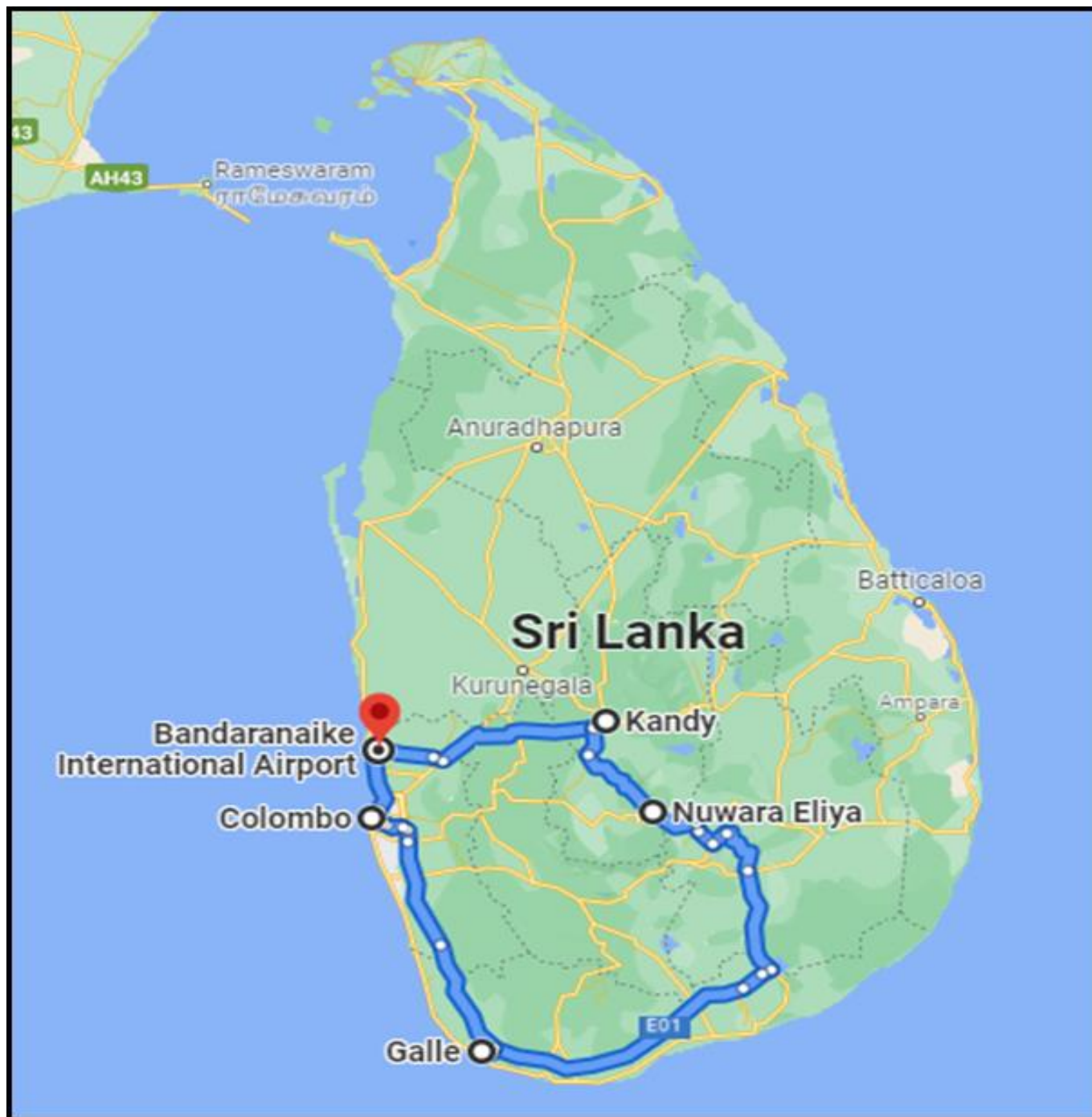
### OVERVIEW

"Ayubowan" is the traditional greeting in Sinhalese meaning  
"May You Enjoy Long Life."

The palms clasped together and a gentle bow of the head accompanies the "Ayubowan", Sri Lanka's gentle gesture of welcome and respect. It is the age-old greeting of our people, and the chances are you will be greeted this way, wherever you happen to travel throughout the island.

What may strike you most about Sri Lanka is its amazing diversity of scenery.

It is possible to pass the brilliant green paddy fields, sun-bronzed beaches, ruined cities, small lively villages, near desert regions, sanctuaries for wildlife in tropical jungles, and the hill country tea plantations, within hours of each other.



### HOTELS

DAY	NIGHTS	LOCATION	HOTELS
01 & 02	02	Kandy	Mahaweli Reach Hotel
03 & 04	02	Nuwara Eliya	Blackpool Hotel
05	01	Galle	Amarai Galle
06	01	Colombo	Ramada Colombo

**BASED ON TWIN SHARING DELUXE ROOM**

**MEALS: FULL BOARD**



## DAY 1 ARRIVAL COLOMBO – KANDY (2 ½ HOURS DRIVE)

- ✚ On arrival, meet our representative.
- ✚ Transfer to the Hotel in Kandy (2 ½ hours drive)
- ✚ Enroute you can see Uthuwankanda and pass the Kadugannawa.
- ✚ Check in hotel.
- ✚ Dinner & Overnight stay at hotel.

### Uthuwankanda

Uthuwankanda is a mountain which is located in Kegalle District. “Uthuwankande Sura Saradiel” who was famous as “Robin Hood of Sri Lanka” was hiding in Uthuwankanda for a while. He fought against British government that ruled Sri Lanka at that time. This historic story is the main attraction of this place.



### Kadugannawa Pass and Tunnel

Kadugannawa is the name of the pass between the Kegalle valley and the Kandy valley. Traditionally, this pass was the main access to Kandy for invaders approaching from Colombo. Several battle took place in the surroundings. Whenever foreign troupes managed to conquer Kandy, the Sinhalese successfully started a guerilla warfare against the supply line running along Kadugannawa. The British were the first foreign power to occupy Kandy permanently. In order to secure access, they constructed a road from Colombo to Kandy.



### Kandy

Resting in the heart of the island is a town called Kandy that is rich in cultural and heritage. Every year millions of locals and tourists alike visit the Temple of the Tooth to witness the awe inspiring Esala Perahera.

**Dinner & Overnight stay at Mahaweli Reach in Kandy – Deluxe Room**

<https://www.mahaweli.com/>



## DAY 2 KANDY

- ✚ Breakfast at hotel.
- ✚ Visit Temple of the Tooth.
- ✚ Visit Old Royal Palace.
- ✚ Visit Peradeniya Botanical Garden.
- ✚ Lunch at the hotel.
- ✚ Visit Kandy View Point.
- ✚ Visit British Garrison Cemetery.
- ✚ Return to hotel.
- ✚ Dinner & Overnight stay at hotel.



### **Kandy Temple of the Tooth (Duration 01 hour)**

The Dalada Maligawa is the temple that houses the relic of the Lord Buddha. It gets its name as the temple was the Royal Place of the former kingdom of Kandy and the last Sri Lankan capital when the kings ruled before the British conquered the country. Kandy is listed as UNESCO heritage site as it is the home of the tooth relic.



### **Old Royal Palace (Duration 01 hour)**

The Royal Palace of Kandy (known as Mahawāsala), situated toward the north of the Temple of the Tooth (Daladà Màligàwa) in Kandy, was the imperial habitation of the Sri Lankan government of the Kingdom of Kandy in Sri Lanka. The last ruler to dwell in it was King Sri Vikrama Rajasinha (1798-1815).



When part of a vast royal residence complex that incorporated the King's Palace (Raja Wasala), Royal Audience Hall (Magul Maduwa), Queen's Palace (Meda Wasala), King's Harem Quarters (Palle Vahale) and Queen's Bathing Pavilion (Ulpange), together with the Temple of the Tooth (Dalada Maligawa). Contiguous the Royal Palace is the Victorian period fabricating that up to this point housed Kandy High Court.



### **Peradeniya Botanical Gardens (Duration 02 hours)**

Elevated 500 ft above sea level the Peradeniya Botanical garden is the largest botanical garden in Sri Lanka.

It was established during the British Colonization, the garden is set along the banks of the largest River in Sri Lanka, the Mahaweli. Due to the climate around Peradeniya the gardens house a variety of both flowering and leafy plants and trees from around the world.



### **Kandy View Point**

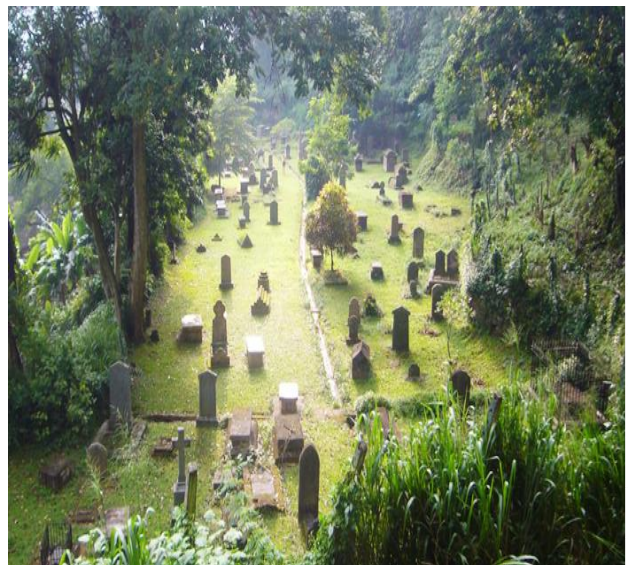
Kandy and not exploring Kandy viewpoint will be a major miss. Located 1.7 KM from the main Kandy city, Kandy view point is regarded as the highest point in the city from where one can appreciate Kandy lake as if just below their feet and also the Dalada Maligawa Temple.



Any photography enthusiast or a nature lover would not miss a chance to get a view of Kandy during the sunset. Visiting Kandy Viewpoint is not just about its picturesque beauty but also provides a quick simple adventure - a short hike through the steep slopes on the way to Kandy viewpoint to admire the magnificent panoramic view of the surroundings with an occasional misty breeze.

### **British Garrison Cemetery**

British Garrison Cemetery is a British cemetery in Kandy, Sri Lanka, for British nationals who died in Ceylon. It was established in 1817 just after British captured the Kandy and closed in 1873 due to a ban on burials within the municipal limits, although special provision was given to allow the burial of relatives of those interred in the cemetery, with last person buried there being Annie Fritz in 1951. The





cemetery contains 195 graves of men, women and children. The most common causes of death were tropical diseases such as malaria and cholera.

### **Dinner & Overnight stay at Mahaweli Reach in Kandy – Deluxe Room**

<https://www.mahaweli.com/>

#### **DAY 3 KANDY – NUWARA ELIYA (2 ½ HOURS DRIVE)**

- ✚ After breakfast transfer to hotel in Nuwara Eliya.
- ✚ Enroute Visit Kotmale Dam & Ramboda Falls
- ✚ Check in hotel.
- ✚ Lunch at hotel.
- ✚ Visit Jagro Strawberry Farm.
- ✚ Nuwara Eliya city Tour.
- ✚ Return to hotel.
- ✚ Dinner & Overnight stay at hotel.



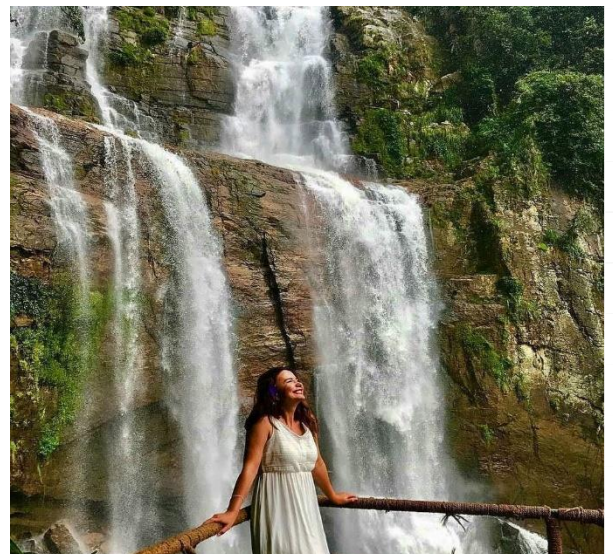
#### **Kotmale Dam**

The Kotmale Dam is a large hydroelectric and irrigation dam in Kotmale. The dam generates power from three 67 MW turbines, totalling the installed capacity to 201 MW, making it the second largest hydroelectric power station in Sri Lanka. Construction on the dam began in August 1979 and was ceremonially completed in February 1985. The dam forms the Kotmale Reservoir, which was renamed to Gamini Dissanayake Reservoir on 11 April 2003 following a request by Prime Minister Ranil Wickramasinghe.



#### **Ramboda Falls**

Ramboda Falls is 109 m high and 11th highest waterfall in Sri Lanka and 729th highest waterfall in the world. It is situated in Pussellawa area, on the A5 highway at Ramboda Pass. It formed by Panna Oya which is a tributary of Kothmale Oya. Altitude of the falls is 945 m above sea level.



## **Jagro Strawberry Farm**

Jagro opened its doors in 2003, revolutionizing the local agriculture industry & changing its landscape. Over the years, we have consistently incorporated best practices into our operations, minimizing the use of pesticides & fertilizer, actively monitoring our impact on the environment and following a stringent quality management process to bring you only the best produce we can grow.



## **Nuwara Eliya**

Wave after wave of tea plantations greet you when you enter the famous town of Nuwara Eliya which gives off the atmosphere of a British countryside village. The combination of a cool climate and a hot cup of tea perfectly framed within a beautiful postcard scenery makes this a must visit in your adventure in Sri Lanka.



**Dinner & Overnight stay at Blackpool Hotel  
in Nuwara Eliya – Deluxe Room**

<https://www.blackpool.lk/>

## **DAY 4 NUWARA ELIYA**

- + Visit Tea Factory.
- + Return to hotel
- + Lunch at hotel.
- + Visit Devon Waterfall & St. Clair's Falls
- + Seetha Amman Temple
- + Holy Trinity Church.
- + Return to hotel.
- + Dinner & Overnight stay at hotel.



## **Tea Factory tour (Duration 01 hour)**

Ceylon Tea is famous all over the world, the handpicked tea leaves are painstakingly picked by women wearing sarees on big baskets they hang on their backs. Each day the woman picks up to 40kgs of fresh leaves. The factory processes the tea leaves by air drying them in





various stages before they are cut to sizes, graded and auctioned according to color and flavor.

### **Devon Waterfall**

Devon Falls, known as the 'Veil of the Valley', is a waterfall in Sri Lanka, situated 6 km west of Talawakele, Nuwara Eliya District on the A7 highway. The falls is named after a pioneer English coffee planter called Devon, whose plantation was situated nearby the falls.



### **St Clair's Falls**

St. Clair's Waterfall is one of Sri Lanka's widest waterfalls, and referred to as the "Little Niagra of Sri Lanka". Although the cascade is just off the Hatton – Talawakele road, it is one of the most picturesque waterfalls as it runs through green hills and lush tea estates. The waterfall got its name from the St. Clair Tea Estate– the tea estate in which it runs through.



### **Seetha Amman Temple**

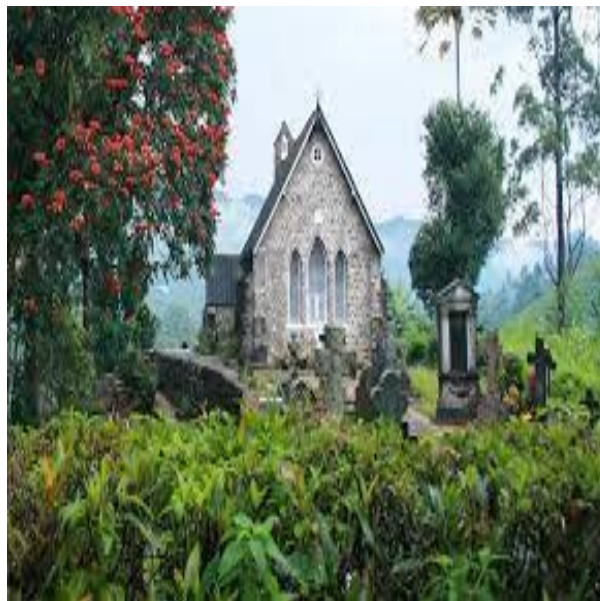
Sita Amman temple is the only Hindu Temple dedicated to Princess Sita in Sri Lanka. This is one of the important Ramayana related places of Sri Lanka. Sita Amman Temple is located in Nuwara Eliya. Sita Eliya area (10 Min drive from Nuwara Eliya Town) close to Ashoka Vatika (This Ashoka Vatika has converted as a Hakgala Botanic Gardens Sri Lanka). Sita Amman temple is one of the important Sri Lanka Ramayana Sites which we can find when travelling along the Ramayana Trail Tour Sri Lanka from Kandy towards Ella via Nuwara Eliya.





## **Holy Trinity Church**

The Holy Trinity Church, consecrated in the year 1852, is a remnant of Nuwara Eliya's colonial past. Located on Church Road, not too far from the Grand Hotel, the church is famed for its English village abbey feel. In fact, the church was also visited by Queen Elizabeth II and Prince Phillip, Duke of Edinburgh in 1954. The Royals were so smitten with the church's quaint atmosphere, that they even donated a stained-glass window and a blue carpet.



**Dinner & Overnight stay at Blackpool Hotel in Nuwara Eliya – Deluxe Room**  
<https://www.blackpool.lk/>

## **DAY 5 NUWARA ELIYA – GALLE (4 ½ HOURS DRIVE)**

- + Breakfast at hotel.
- + Transfer to hotel in Galle.
- + Enroute visit Ravana Falls & Point Dondra.
- + Check in hotel.
- + Lunch at hotel.
- + Galle city Tour.
- + Visit Stilt Fishing.
- + Return to hotel.
- + Dinner & Overnight stay at hotel.



## **Ravana Falls (Duration 01 hour)**

A waterfall of 1080 feet high close to the road from Ella to Wellawaya about 6 Km south from Ella. The stream, a tributary of Kirindi Oya plunges with a foaming spray over a series of ledges into the valley. King Ravana of Ramayana legend is said to have lived in one of the caves above the waterfalls.



## **Visit Point Dondra**

Dondra Head Lighthouse is a lighthouse located on Dondra Head, Dondra, the southernmost point in Sri Lanka and is Sri Lanka's tallest lighthouse, and also one of the tallest in South East Asia. Dondra Head lighthouse is operated and maintained by the Sri Lanka Ports Authority.



## **Galle (Duration 01 hour)**

A vintage postcard town straight from the Dutch colonial area, Galle is a tourist must-see. Famous for its Dutch fort that has witnessed conquest after conquest, Galle was a major trading point in British Ceylon. Its paved streets, unique buildings and the history etched deep within its ancient architecture, speaks volumes about the island's past and is a great place to visit if you're interested in surfing, sea food, colonial history and island life.



## **Stilt Fishing**

From Koggala to Ahangama the southern beach belt is dotted with poles embedded on the sea floor. You will see fisherman perched on these and fishing in shallow water fly fishing.

They capture small to medium fish that get carried with the currents onto the shore.



## **Dinner & Overnight stay at Amari Galle in Galle – Deluxe Room**

<https://www.amari.com/galle-srilanka>

### **DAY 6 GALLE – COLOMBO (2 ½ HOURS DRIVE)**

- ✚ Breakfast at hotel.
- ✚ Transfer to Colombo.
- ✚ Enroute visit Moonstone Mine & Mask Marking.
- ✚ Check in hotel in Colombo.
- ✚ Lunch at hotel.
- ✚ Colombo City tour
- ✚ Dinner and Overnight stay in hotel in Colombo





### **Moon stone Mine**

Meetiya Goda is a few Km away from the Coastal town of Bentota and deep in the lush forest are the rabbit holes like mines that bring out moon stones.

See how these stones are brought up to the surface and cut and polished and even set to make beautiful jewellery



### **Mask Making**

Your host will tell you stories of carving from the past and the techniques involved. Create your own souvenir of your trip to UNESCO world heritage awarded Galle Fort. Follow your hosts guidance and observe his techniques as together you mould your creation. Traditional resources such as recycled paper, Kittul (Fishtail Palm), Kurundu (Cinnamon) Clay are some of the products used.



### **Colombo**

Wonder amidst the hustle and bustle of Sri Lanka's commercial capital and bask in the city's urban lifestyle. A pot of multiple ethnicities, Colombo showcases the unity among its vibrant people. Shop for local antiquities including Sri Lanka's world-famous tea and engage in the dazzling nightlife during your stay here.



**Dinner & Overnight stay at Ramada Hotel in Colombo – Deluxe Room**

<https://www.wyndhamhotels.com/ramada/colombo-sri-lanka/ramada-colombo>

### **DAY 7 DEPARTURE COLOMBO - SINGAPORE**

Breakfast in hotel. Free and easy until time for transfer to Colombo International Airport for your flight departure to Singapore.



## IMPORTANT NOTICE

- + This programme made for fully vaccinated clients.
- + According to current protocol, if clients arrive after 2 weeks and after 2 Vaccines, they don't need to do PCR test on arrival.
- + Fully vaccinated travellers if accompanied by not-vaccinated/not-fully vaccinated children of 12-18 years, pay for on-arrival PCR test at US\$40 per test. Travellers can pay for PCR test at the Ministry of Health approved laboratory established at Bandaranaike International Airport (BIA) or any other MOH approved laboratory. Also, travellers can visit [www.visitsrilanka.gov.lk](http://www.visitsrilanka.gov.lk) to pay in advance.
- + On departure, airline requirement to be followed for PCR testing.

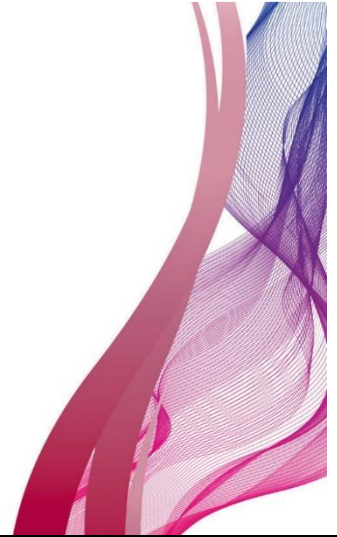
## INCLUSIONS

- + Accommodation at the hotels specified in the itinerary,
- + Accommodations on Full Board Basis for 06 nights stay.
- + Transportation in a private air-conditioned vehicle:
  - 33 Seater for 20 pax
  - 45 Seater for 25-30 pax
- + English speaking National Guide.
- + Quote inclusive of prevailing government taxes.
- + Rooms are subject to availability.
- + 2 bottles of mineral water per person per day while on tour.
- + Gift Tea pack on departure.
- + Entrance Tickets to the following:
  - Uthuwankanda
  - Kadugannawa Pass and Tunnel
  - kadugan
  - Peraddeniya Botanical Garden
  - Temple of the Tooth
  - Old Royal Palace
  - British Garrison Cemetery
  - Kandy View Point
  - Kotmale Dam
  - Ramboda Falls
  - Jagro Strawberry Farm
  - Nuwara Eliya
  - Tea Factory
  - Seetha Amman Temple





- Holy Trinity Church
- St. Clairs Falls
- Ravana Falls
- Point Dondra
- Galle
- Stilt Fishing
- Moonstone Mine
- Mask Marking
- Colombo city tour



## EXCLUSIONS

- ✚ All International & Domestic Air Tickets
- ✚ All Travel Insurance
- ✚ Camera & Video permits at Cultural sights.
- ✚ All expenses of personal nature.
- ✚ Any additional equipment or site visit which are not mention in the tour program.
- ✚ Tipping for tour guide and driver.
- ✚ Tipping for portorage.
- ✚ All Optional tours
- ✚ Current Covid-19 Health protocols

